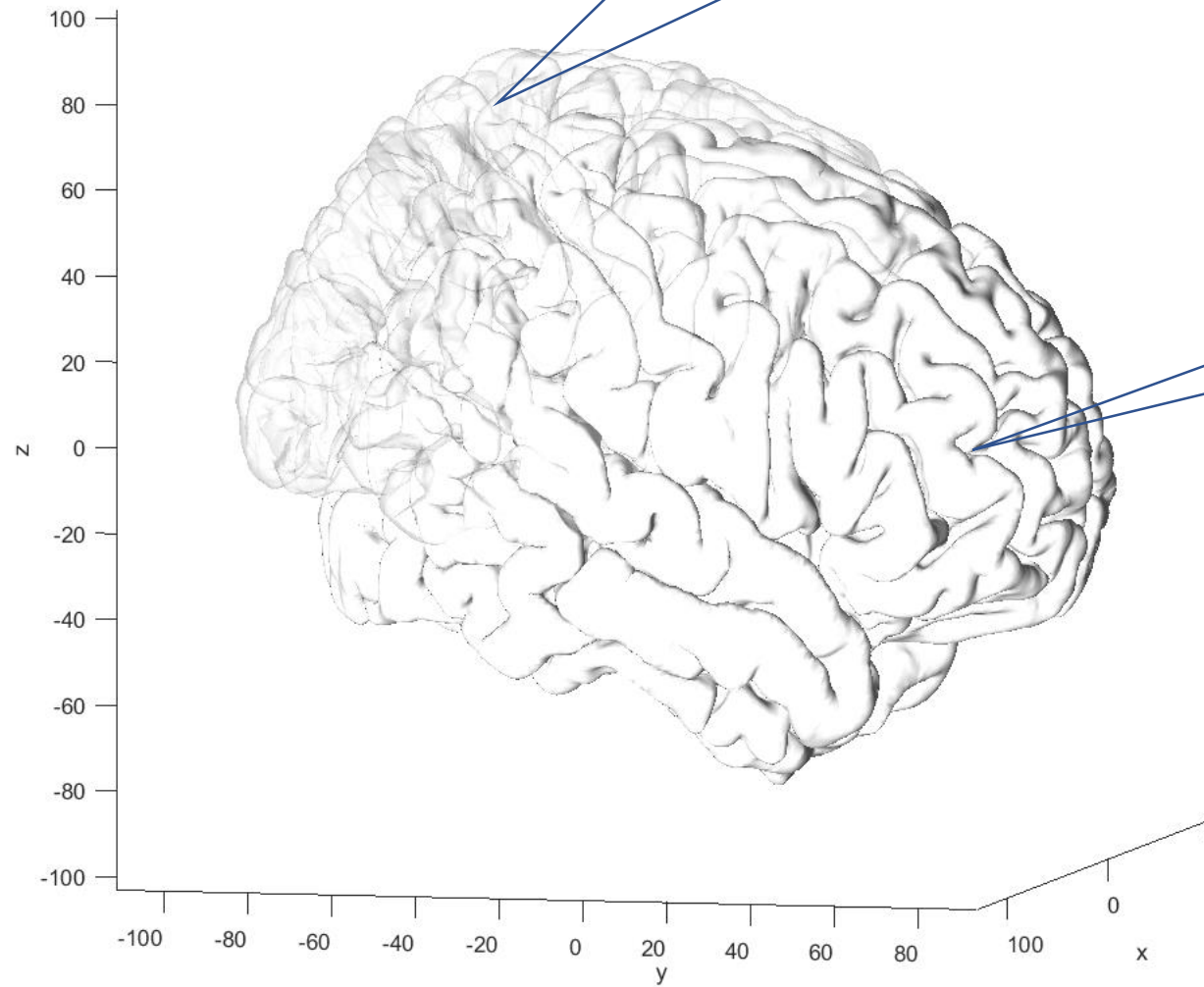


Transparent brain model is from [Surface_pial_both.mat](#)

Why two brain models are not in the same coordinate ?

Opaque brain model is generated from Freesurfer using the file [single_subj_T1_1mm.nii](#)



<input type="checkbox"/>	single_subj_T1.nii	2016/2/5 12:57	NII 文件	1,764 KB
<input checked="" type="checkbox"/>	single_subj_T1_1mm.nii	2016/2/5 12:57	NII 文件	13,886 KB
<input type="checkbox"/>	surface_inflated_both	2017/2/17 10:50	Microsoft Acces...	13,859 KB
<input type="checkbox"/>	surface_inflated_both_caret	2017/2/17 10:50	Microsoft Acces...	10,289 KB
<input type="checkbox"/>	surface_inflated_left	2017/2/17 10:50	Microsoft Acces...	7,018 KB
<input type="checkbox"/>	surface_inflated_left_caret	2017/2/17 10:50	Microsoft Acces...	5,210 KB
<input type="checkbox"/>	surface_inflated_right	2017/2/17 10:50	Microsoft Acces...	6,841 KB
<input type="checkbox"/>	surface_inflated_right_caret	2017/2/17 10:50	Microsoft Acces...	5,080 KB
<input type="checkbox"/>	surface_pial_both	2017/2/17 10:50	Microsoft Acces...	13,837 KB
<input type="checkbox"/>	surface_pial_left	2017/2/17 10:50	Microsoft Acces...	7,010 KB
<input type="checkbox"/>	surface_pial_right	2017/2/17 10:50	Microsoft Acces...	6,828 KB
<input type="checkbox"/>	surface_white_both	2017/2/17 10:50	Microsoft Acces...	13,783 KB
<input type="checkbox"/>	surface_white_left	2017/2/17 10:50	Microsoft Acces...	6,982 KB
<input type="checkbox"/>	surface_white_right	2017/2/17 10:50	Microsoft Acces...	6,802 KB