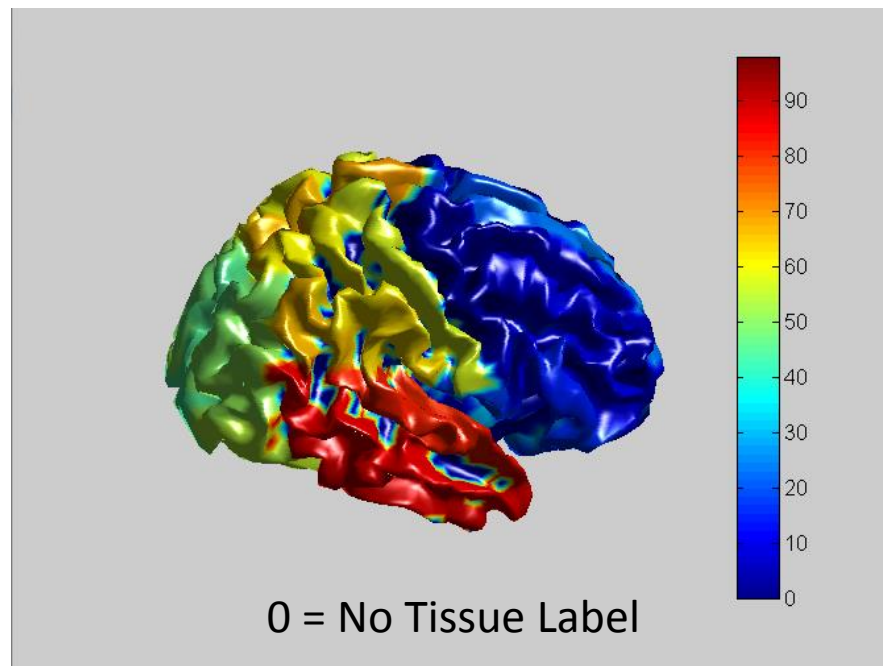
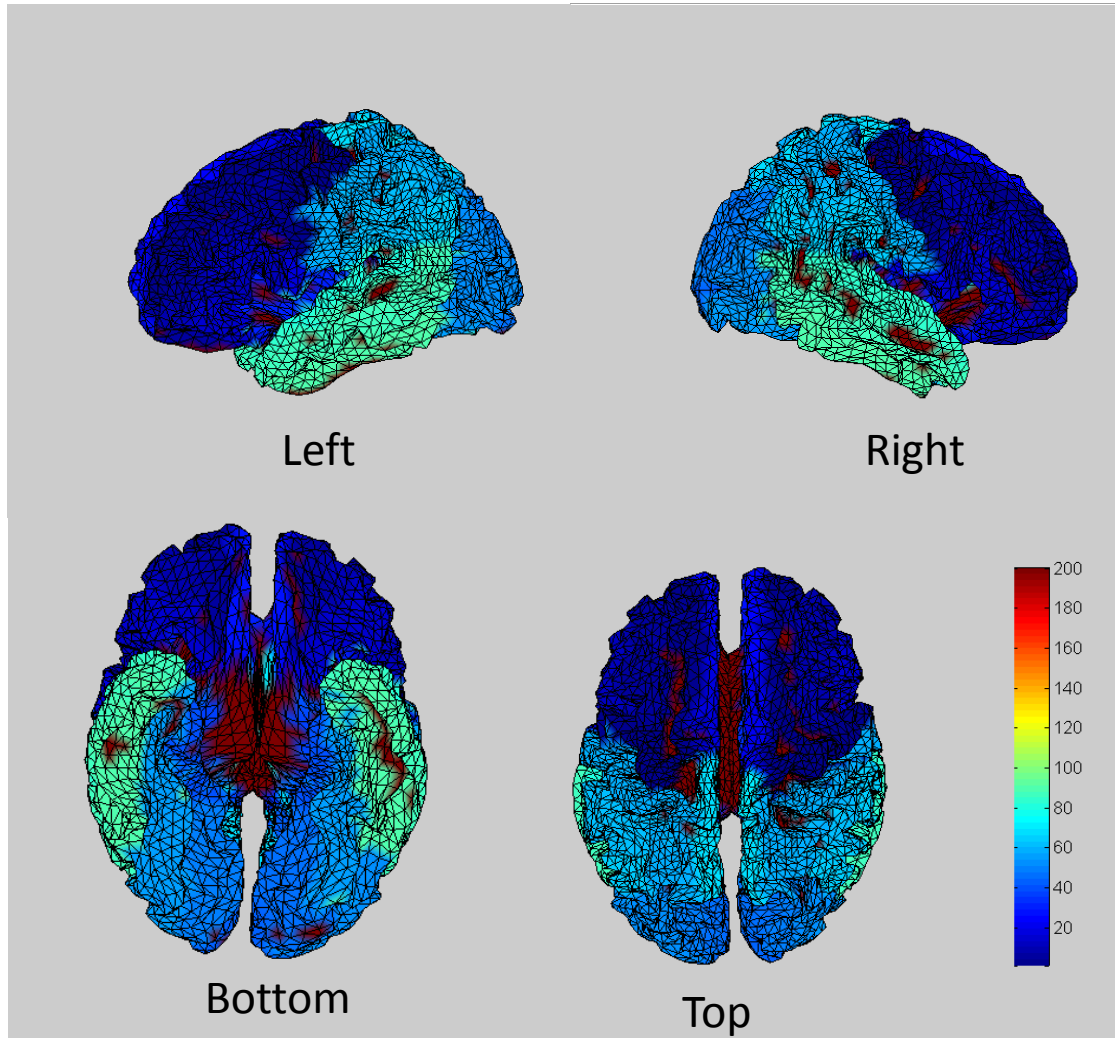


Parcellate cortical sheet with AAL atlas

```
aal = ft_read_atlas('C:\MyTemp\Toolbox\fieldtrip\fieldtrip_git\template\atlas  
mne_sourcemodel=ft_read_headshape('cortex_8196.surf.gii');  
  
cfg = [];  
cfg.interpmethod = 'nearest';  
cfg.parameter = 'tissue';  
mne_sourcemodel_with_label = ft_sourceinterpolate(cfg, aal, mne_sourcemodel);
```





Red color highlights vertices that has no labels (200 = No Tissue Label)